

Developing the Mexico National Emissions Inventory

Paula Fields, Marty Wolf
ERG, Inc.
Sacramento, California

Gildardo Acosta Ruíz
Acosta y Asociados
Agua Prieta, Sonora

Rich Halvey
Western Governors' Association
Denver, Colorado

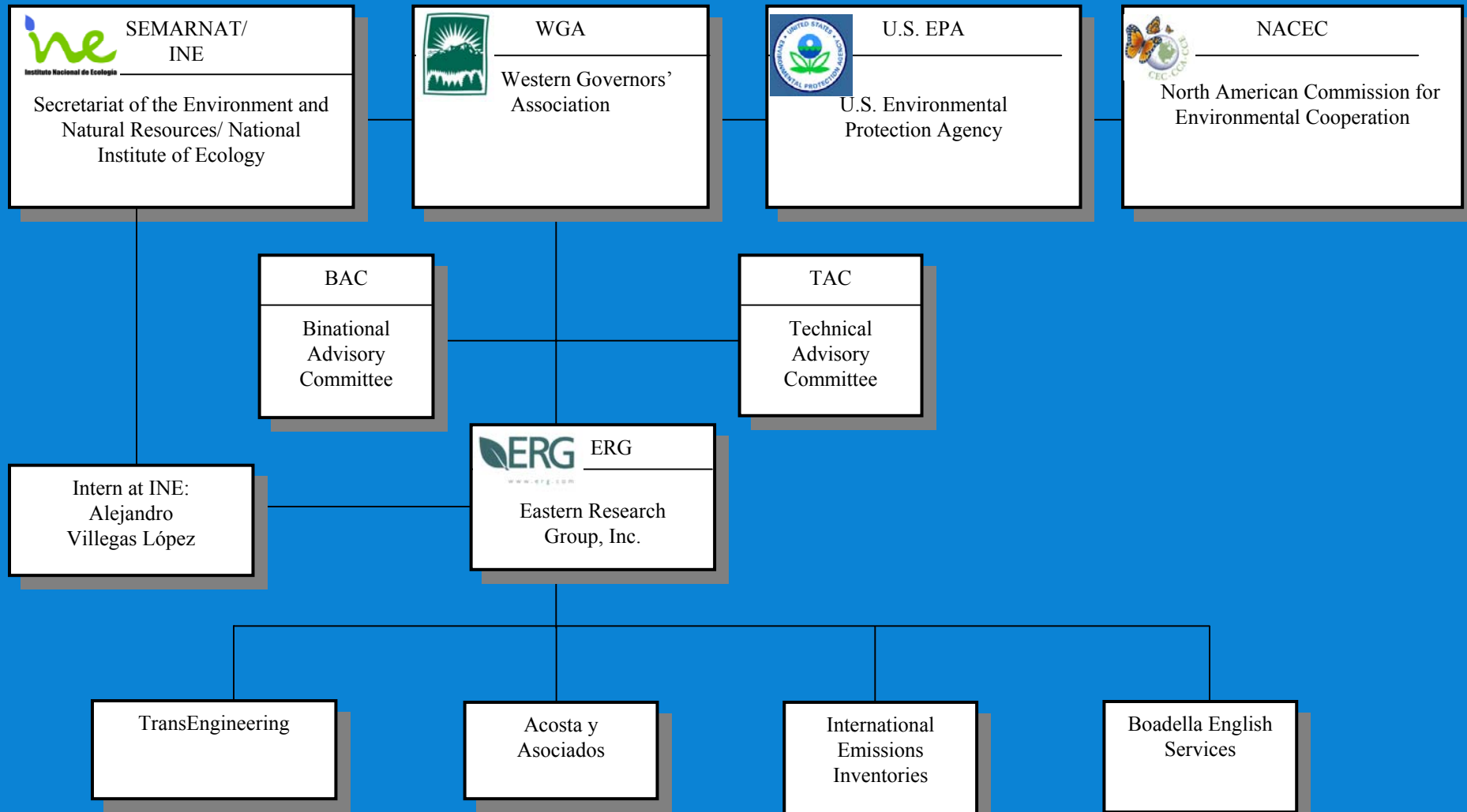
NARSTO Emissions Inventory Workshop
Austin, Texas
October 14-17, 2003



History of Projects to Build Inventory Capacity

- 1994 to 2001:
 - Inventory manuals and training
 - Special studies
 - MOBILE5-Mexico model
 - Inventories in Mexicali and Tijuana
- 2001 to date: Mexico National Emissions Inventory (NEI)

Organization of the Mexico Emissions Inventory Projects



Mexico NEI Schedule

| Phase | Scope | Status |
|-------|---|----------------------------|
| I | Planning | Completed July 2002 |
| II | Preliminary Mexico NEI for the Six Northern States | Completed July 2003 |
| III | Draft Final Mexico NEI for the entire country | Scheduled March 2004 |
| | Final Mexico NEI | Scheduled July 2004 |

Unique Aspects of the Mexico NEI

- **Procedural:**

- Partnering so that Mexico has a leadership role
- Overcoming obstacles related to data availability
- Managing data ownership and confidentiality concerns

- **Technical:**

- State-by-state data collection for point sources
- National fuel balance
- Per capita VKT estimates
- Remote sensing data for paved/unpaved road distribution

Mexico NEI Goals and Characteristics

- **Goals:**

- Develop first national inventory for Mexico
- Facilitate EI capacity in Mexico
- Support other tri-national air quality goals

- **Characteristics:**

- 1999 annual inventory
- Criteria pollutants + NH₃
- State-level for border states
- Municipality-level for all 32 states



Mexico NEI Source Types

| Source Type | Draft/Preliminary Inventory Categories | Additional Draft Final/Final Inventory Categories |
|----------------|---|---|
| Point | <ul style="list-style-type: none"> • 11 federal sectors • State-jurisdiction sources | |
| Area | <ul style="list-style-type: none"> • Solvent, ammonia sources • Commercial, residential fuel use • Paved and unpaved roads • Locomotives, aircraft, vessels • ~30 others | <ul style="list-style-type: none"> • Wind erosion • Charbroiling, vendors • Graphic arts • ~10 others |
| Mobile | <ul style="list-style-type: none"> • Light and heavy-duty vehicles | |
| Nonroad | <ul style="list-style-type: none"> • Not included | <ul style="list-style-type: none"> • Agricultural machinery • Construction equipment |
| Natural | <ul style="list-style-type: none"> • Vegetative VOC • Soil NO_x | <ul style="list-style-type: none"> • Volcanic SO_x |

Preliminary Mexico NEI

- Methods
- Data collection process
- Results

Mexico NEI

Point Source Methodology

- Use existing databases for areas with air quality plans and existing inventories
- Collect other data from State Environmental Agencies (SEAs) and Federal Regions
- Perform QA and make corrections
- Report results with confidence rating by facility

Mexico NEI

Area Sources Methodology

- Use preferred methods for preliminary inventory
- Collect raw data from agencies etc.
- Conduct special study for paved/unpaved road VKT
- Calculate emissions with emission factors, material balance
- Allocate (disaggregate) to state level
- Report results with confidence rating by source category

Confidence Rating Approach

| Rating | Activity Data | Emission Factor |
|--------|--|---|
| A | Based on comprehensive Mexico-specific data | Based on comprehensive Mexico-specific data |
| B | Based on limited/extrapolated Mexico-specific data | Based on limited Mexico-specific data |
| C | Based on expert judgment | Based on expert judgment |
| D | Based on extrapolated U.S. data | Based on U.S. factors |
| E | Insufficient data | No emission factors exist |

Mexico NEI

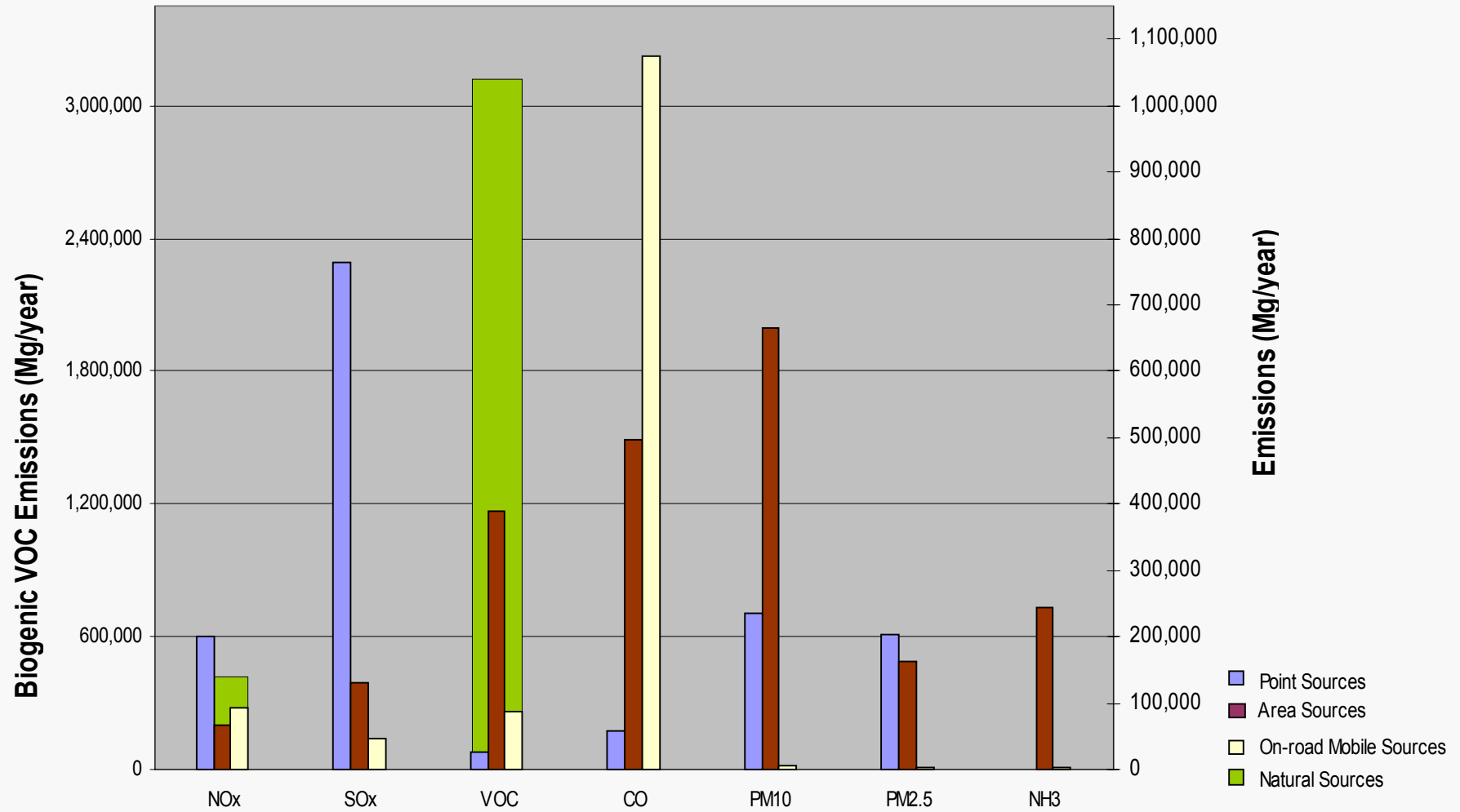
Mobile Sources Methodology

- Determine daily per capita emission rates for 7 representative urban areas
 - Traffic volume, congestion modeling => link-level VKT
 - MOBILE6-Mexico model => emission factors
 - PrepinPlus => Emission rates assigned to specific links
 - Total daily emissions = $\Sigma(\text{daily link emissions})$
 - Per capita emissions = Total daily emissions / population
- Estimate annual emissions for each municipality
 - Emissions = Daily per capita emissions \times population \times 365

Mexico NEI: Natural Sources Methodology

- 3 (Emission factor \times area by vegetation type)
- Model required for complex algorithms
 - Global Biosphere Emission and Interactions System (GloBEIS)
- Estimates developed for each municipality; summed up to the state level

Preliminary 1999 Mexico NEI for the Six Northern States

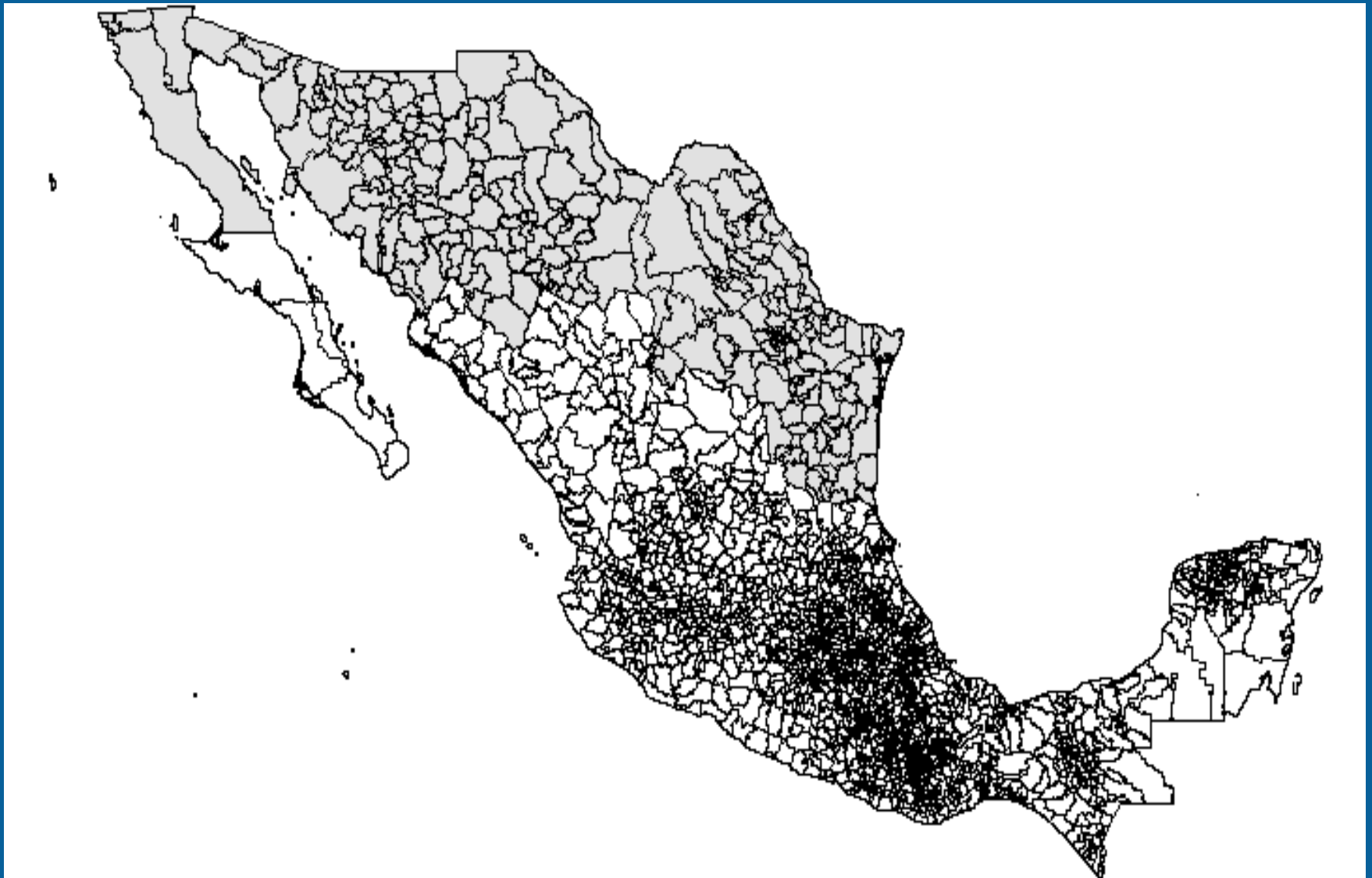


Preliminary 1999 Mexico NEI for the Six Northern States

| Source Type/ Location | NO _x | SO _x | VOC | CO | PM ₁₀ | PM _{2.5} | NH ₃ |
|--|-----------------|-----------------|------------------|------------------|------------------|-------------------|-----------------|
| Point Source Emissions by State (Mg/year) | | | | | | | |
| Baja California | 5,695 | 26,605 | 16,567 | 758 | 6,079 | 4,679 | 0 |
| Coahuila | 113,760 | 157,762 | 917 | 18,888 | 156,903 | 146,347 | 0 |
| Chihuahua | 18,133 | 65,187 | 2,308 | 13,822 | 7,241 | 6,279 | 0 |
| Nuevo León | 16,403 | 49,003 | 3,816 | 15,891 | 31,635 | 28,754 | 0 |
| Sonora | 32,190 | 331,485 | 2,098 | 4,585 | 30,865 | 14,728 | 0 |
| Tamaulipas | 12,882 | 133,568 | 1,124 | 2,769 | 3,805 | 2,969 | 0 |
| Emissions by Source Type (Mg/Year) | | | | | | | |
| <i>Point Sources</i> | 199,063 | 763,610 | 26,830 | 56,713 | 236,528 | 203,756 | 0 |
| <i>Area Sources</i> | 65,516 | 130,194 | 389,975 | 496,587 | 663,659 | 163,080 | 243,354 |
| <i>MV Sources</i> | 93,367 | 45,683 | 88,277 | 1,075,116 | 4,695 | 4,302 | 1,596 |
| <i>Natural Sources</i> | 417,884 | 0 | 3,120,629 | 0 | 0 | 0 | 0 |
| Total (Mg/Year) | 775,829 | 939,487 | 3,625,711 | 1,628,416 | 904,883 | 371,138 | 244,951 |

Mexico NEI Schedule

| Phase | Scope | Status |
|-------|--|-----------------------------|
| I | Planning | Completed July 2002 |
| II | Preliminary Mexico NEI for the Six Northern States | Completed July 2003 |
| III | Draft Final Mexico NEI for the entire country | Scheduled March 2004 |
| | Final Mexico NEI | Scheduled July 2004 |



Mexico NEI Data Release Policy

Acknowledges importance of data for air quality planning in the U.S. and Mexico, and respects Mexico's ownership of the data and results

“Project sponsors have agreed that data files will not be released until the inventory has been approved by Mexico and published in final form, except in extraordinary circumstances, and even then with certain limitations and restrictions. This will not occur until at least March 2004 for the six northern Mexican states and July 2004 for the remainder of the country.”